

Human Services

- Administration
- Administration
 - Sensitive Crimes

- Public Health
- Administration
 - Environmental Health
 - Bio-Terrorism
 - Nursing

Children, Youth and Families

- Administrative Support
- Alternate Care
- Children & Family Support
 - Prevention
 - Counseling/Therapeutic Services
 - Family Day Treatment
 - JFF Teams
 - Direct Service Support
- A.O.D.A. - Children, Family, Adult
 - Community Residential - Alcohol
 - Assessment/Intervention
 - Case Management
 - Community Based Treatment
 - Community Prevention
 - Detoxification
 - Information/Referral
 - Inpatient
 - Outreach
 - Residential Treatment
- Children Come First
- Juvenile Delinquency Supervision
 - Neighborhood Intervention Program
- Youth Commission

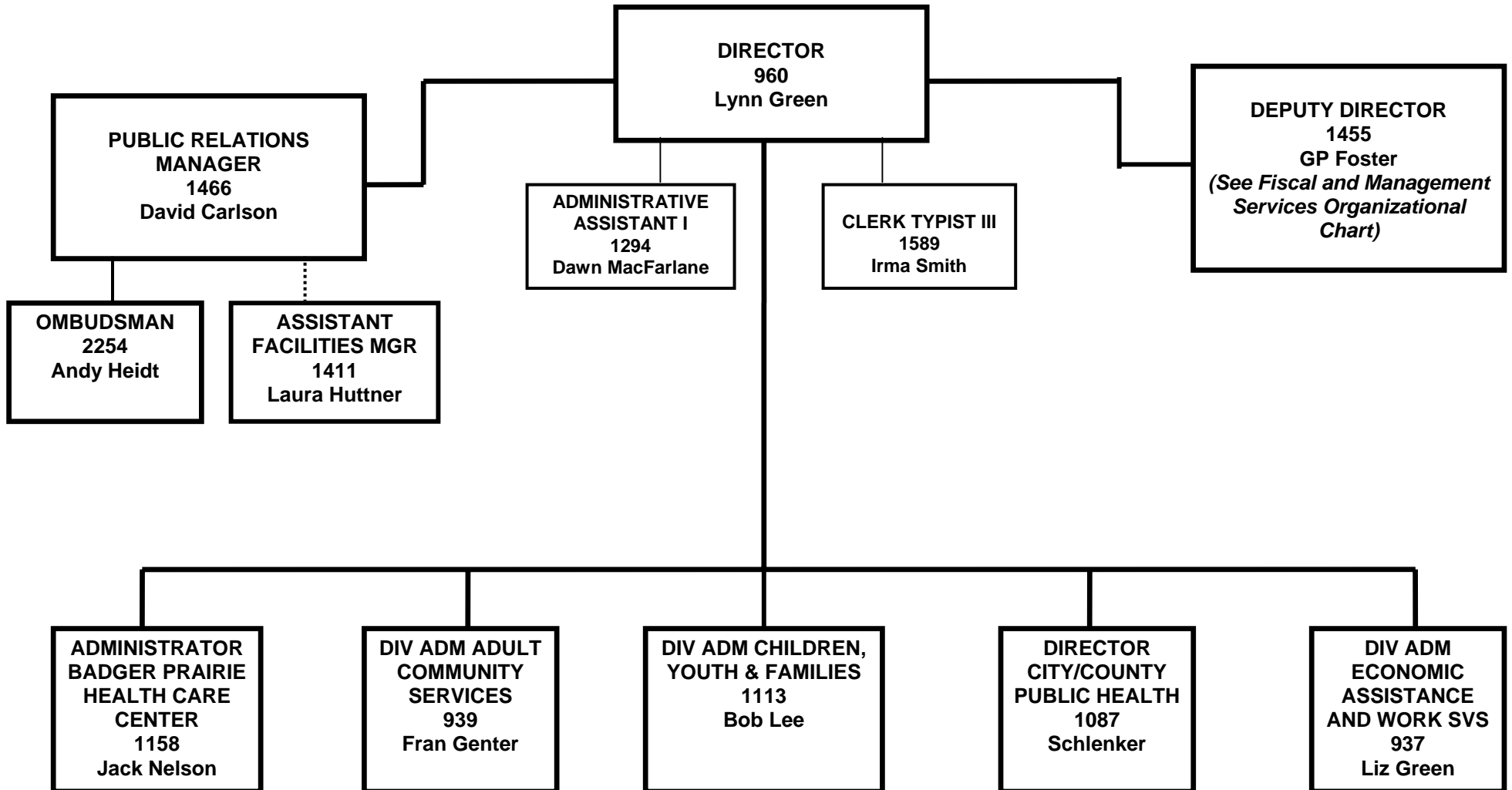
Adult Community Services

- Administration
- Area Agency on Aging
 - Access/Advocacy
 - Community Support
 - In Home Support
 - Nutrition
 - Transportation
- Aging Long Term Care
 - Adaptive Equipment
 - Elderly Long-Term Support Personnel
 - CIP/COP Case Management
 - Communication Aids
 - In Home Support
- Developmental Disabilities - Adult
 - Access
 - Case Management Personnel
 - Day Service
 - Long-Term Support
 - Residential Services
 - Specialized Transportation
 - Support Services
 - Supported Employment
 - Workday Services
- Developmental Disabilities - Child
 - Access
 - Day Services
 - Case Management Personnel
 - Residential Services
 - Support Services
- Mental Health
 - Access
 - Assessment
 - Case Management
 - Community Support
 - Inpatient
 - Residential Services
 - Supported Employment
 - Treatment
 - Work/Day Services
- Physical Disabled
 - Case Management
 - In-Home Support
 - Personal Care Coordination
 - Physical Disabled L.T.S. Personnel
- Sensory Disability
 - Deaf and Hard-of-Hearing Case Management
 - Interpreter Services
- Jail Diversion
- Badger Prairie Health Care Center
 - Administration
 - Health Care Center

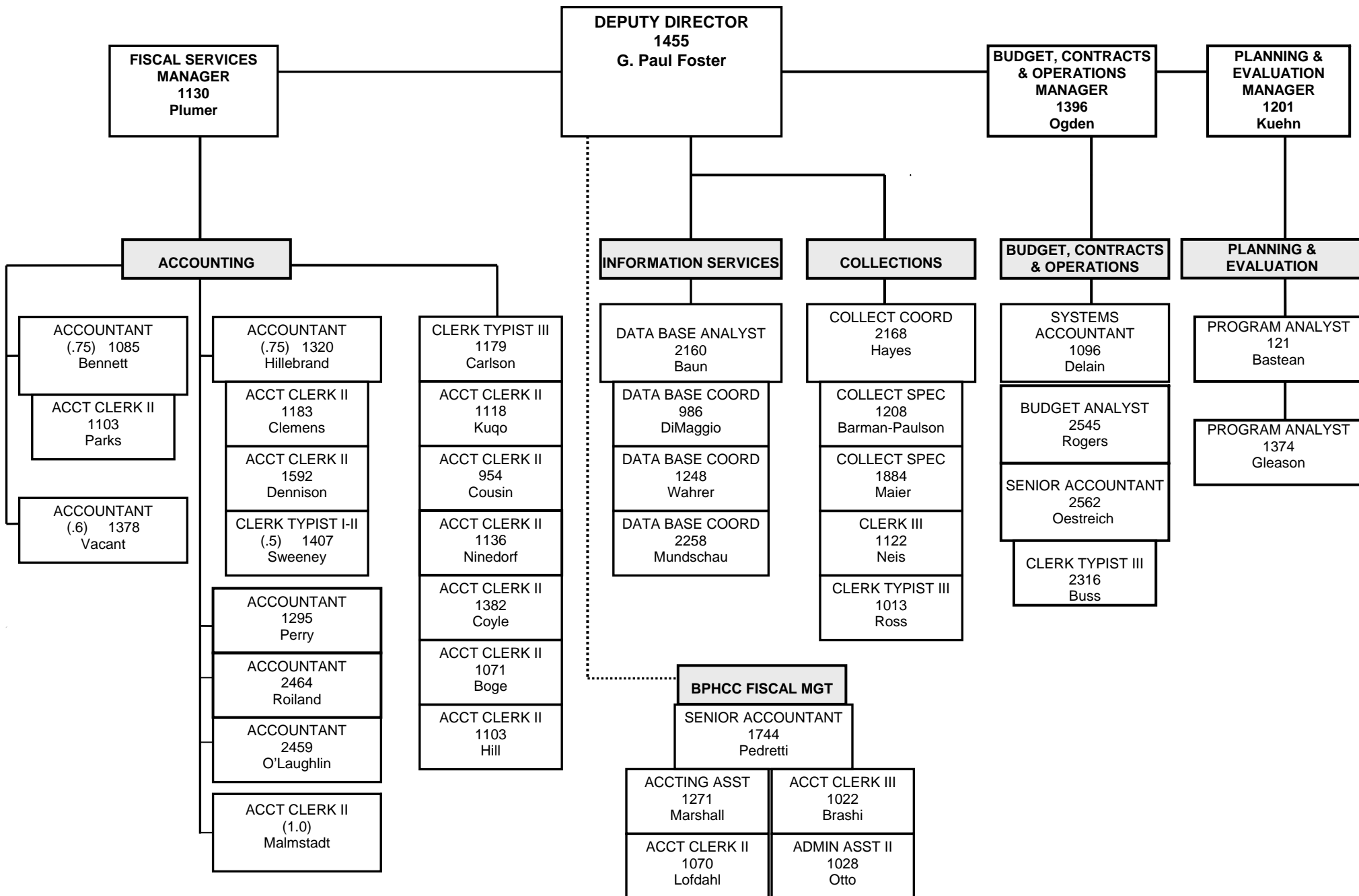
Economic Assistance and Work Services

- Administration
- Other Programs
 - Clothing/Food Distribution
 - Energy Services
 - Federal/State Benefits
 - Integrity
 - Support
 - Emergency Shelter
- Interim Assistance
 - Medical/Prescriptions
 - Food Stamps
- Child Care
 - Direct Service Support Personnel
 - Other
- Eligibility Determination Personnel
 - Personnel
 - Program Integrity
 - Support
- Housing and Homeless Assistance
 - Emergency Shelter/Housing Services
 - Counseling
 - Support
 - Food Vouchers
- Employment and Training
 - Training and Support
 - Financial Counseling
 - Work Experience
 - Jobs
- Capitol Consortium
 - W-2
 - Training
 - Support

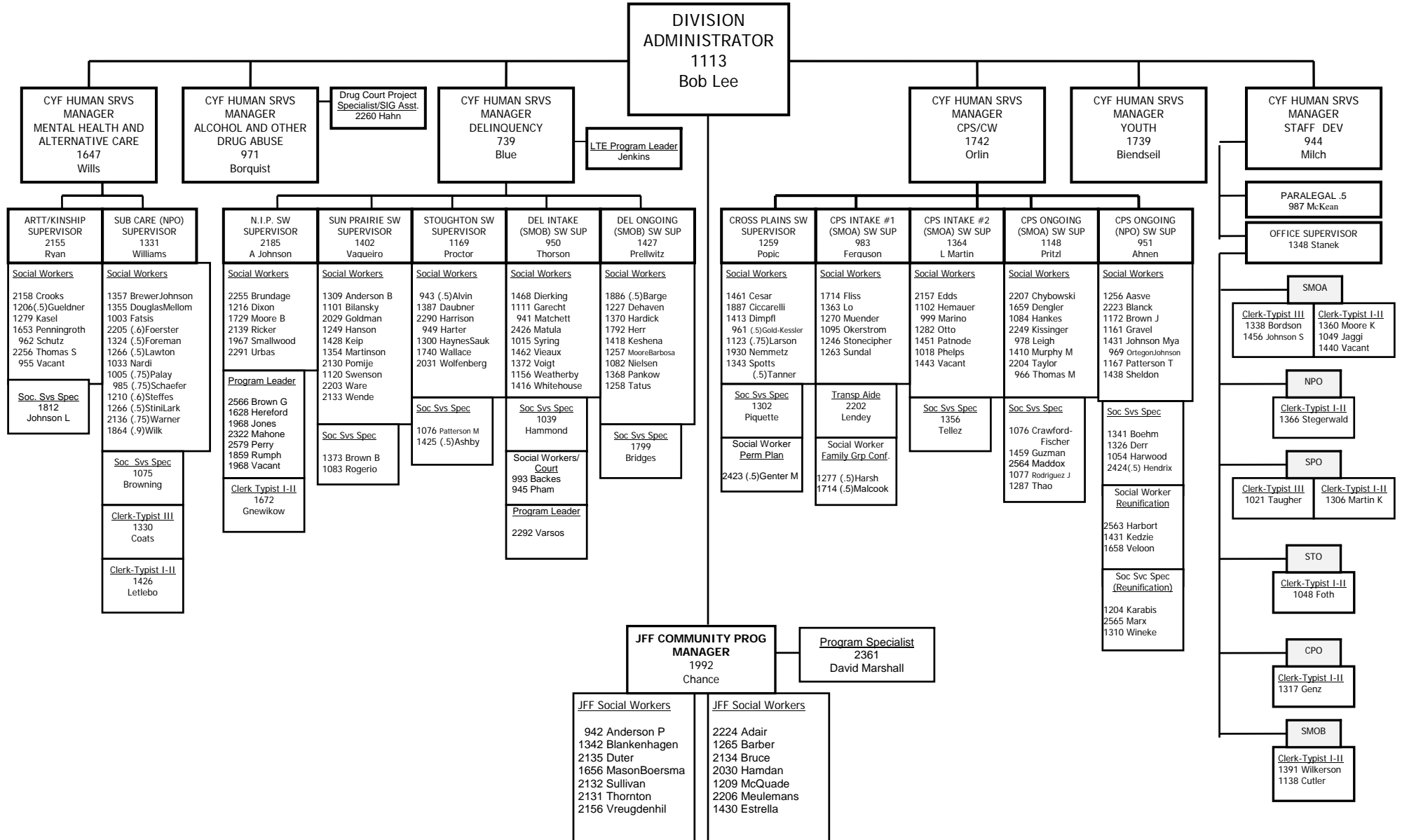
**DANE COUNTY DEPARTMENT OF HUMAN SERVICES
ADMINISTRATION ORGANIZATIONAL CHART
August 2006**



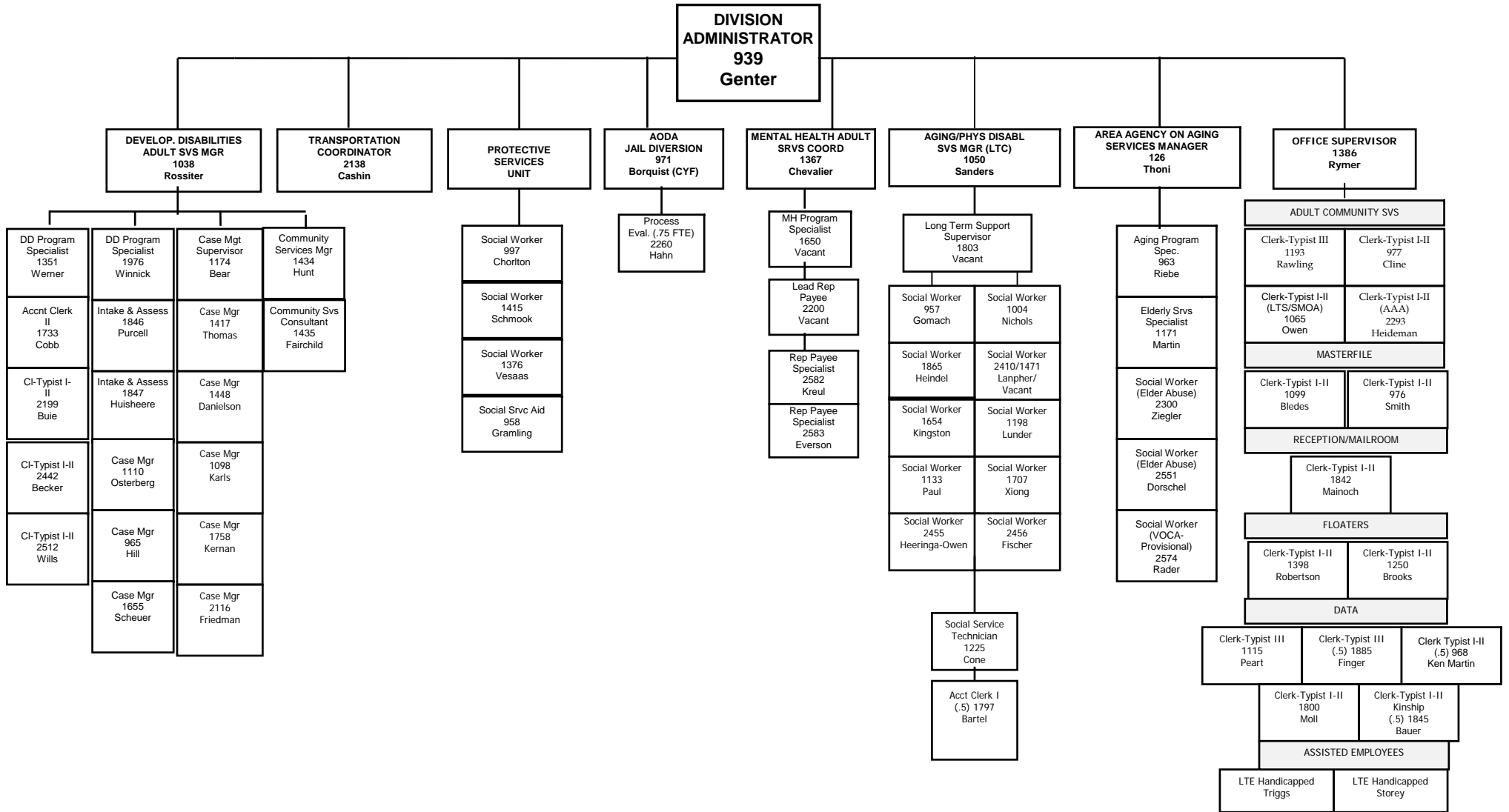
**DANE COUNTY DEPARTMENT OF HUMAN SERVICES
FISCAL AND MANAGEMENT SERVICES ORGANIZATIONAL CHART
August 2006**



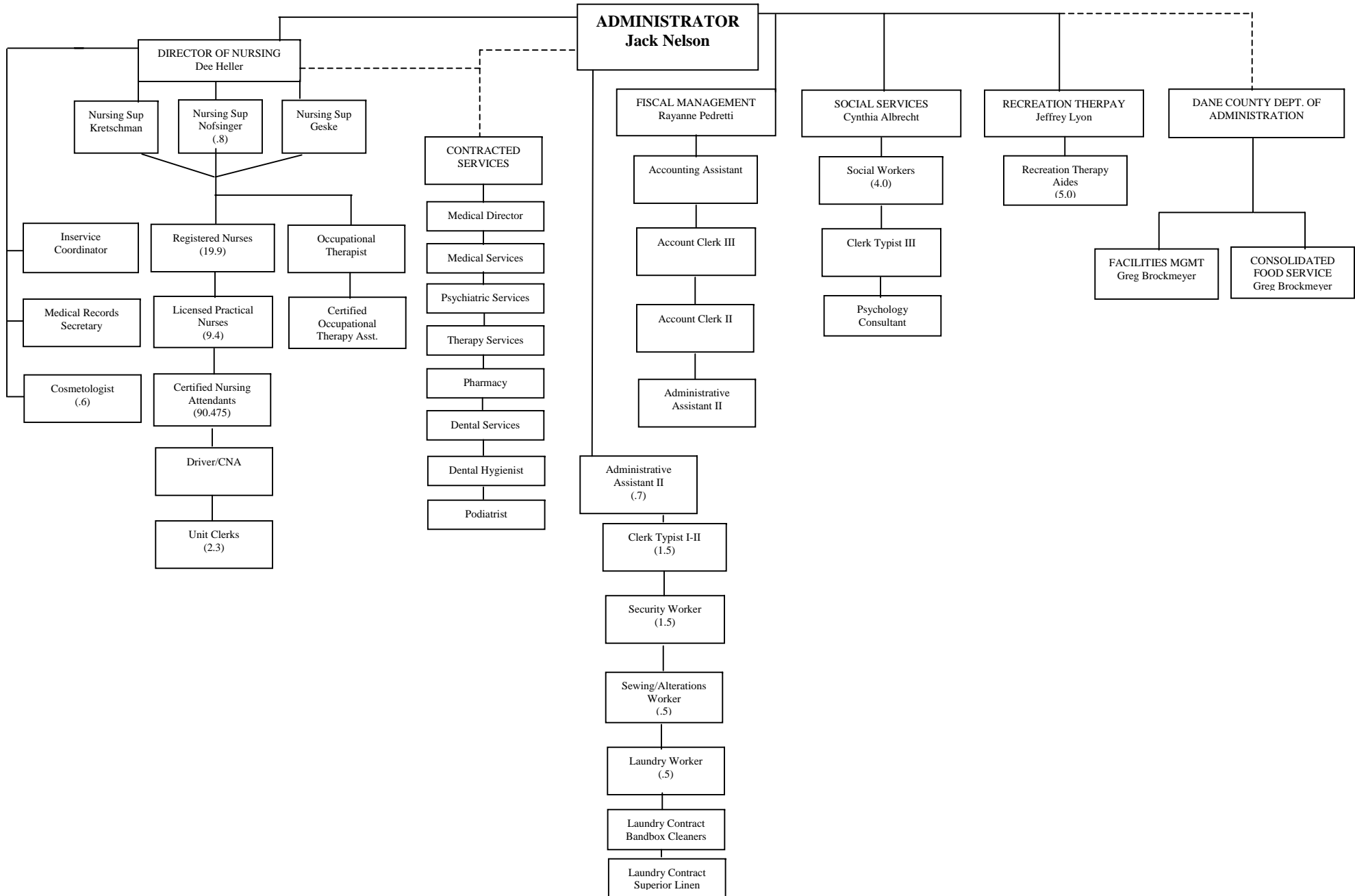
DANE COUNTY DEPARTMENT OF HUMAN SERVICES CHILDREN, YOUTH & FAMILIES ORGANIZATIONAL CHART May 2006



DANE COUNTY DEPARTMENT OF HUMAN SERVICES ADULT COMMUNITY SERVICES ORGANIZATIONAL CHART May 2006

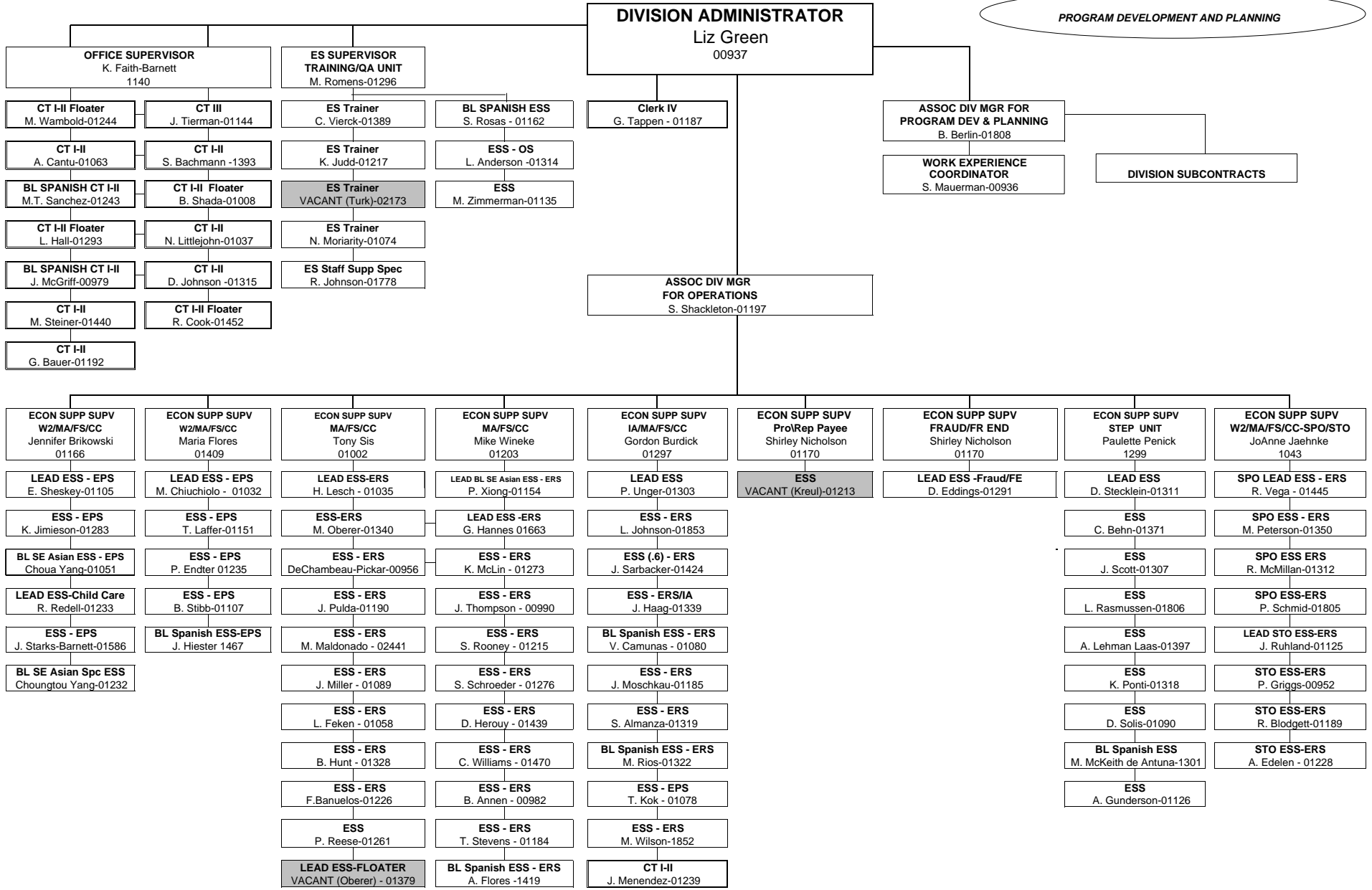


**DANE COUNTY DEPARTMENT OF HUMAN SERVICES
BADGER PRAIRIE HEALTH CARE CENTER ORGANIZATIONAL CHART
August 2006**



**DANE COUNTY DEPARTMENT OF HUMAN SERVICES
ECONOMIC ASSISTANCE & WORK SERVICES DIVISION
ORGANIZATIONAL CHART**

AS OF 06-12-06



DANE COUNTY DEPARTMENT OF HUMAN SERVICES PUBLIC HEALTH ORGANIZATIONAL CHART

**Director of Public Health for
Madison & Dane County
01087
Schlenker**

**PUB HLTH NURSING DIR
01405
Frazak**

**ENVIRON HEALTH DIR
01176
Clark**

