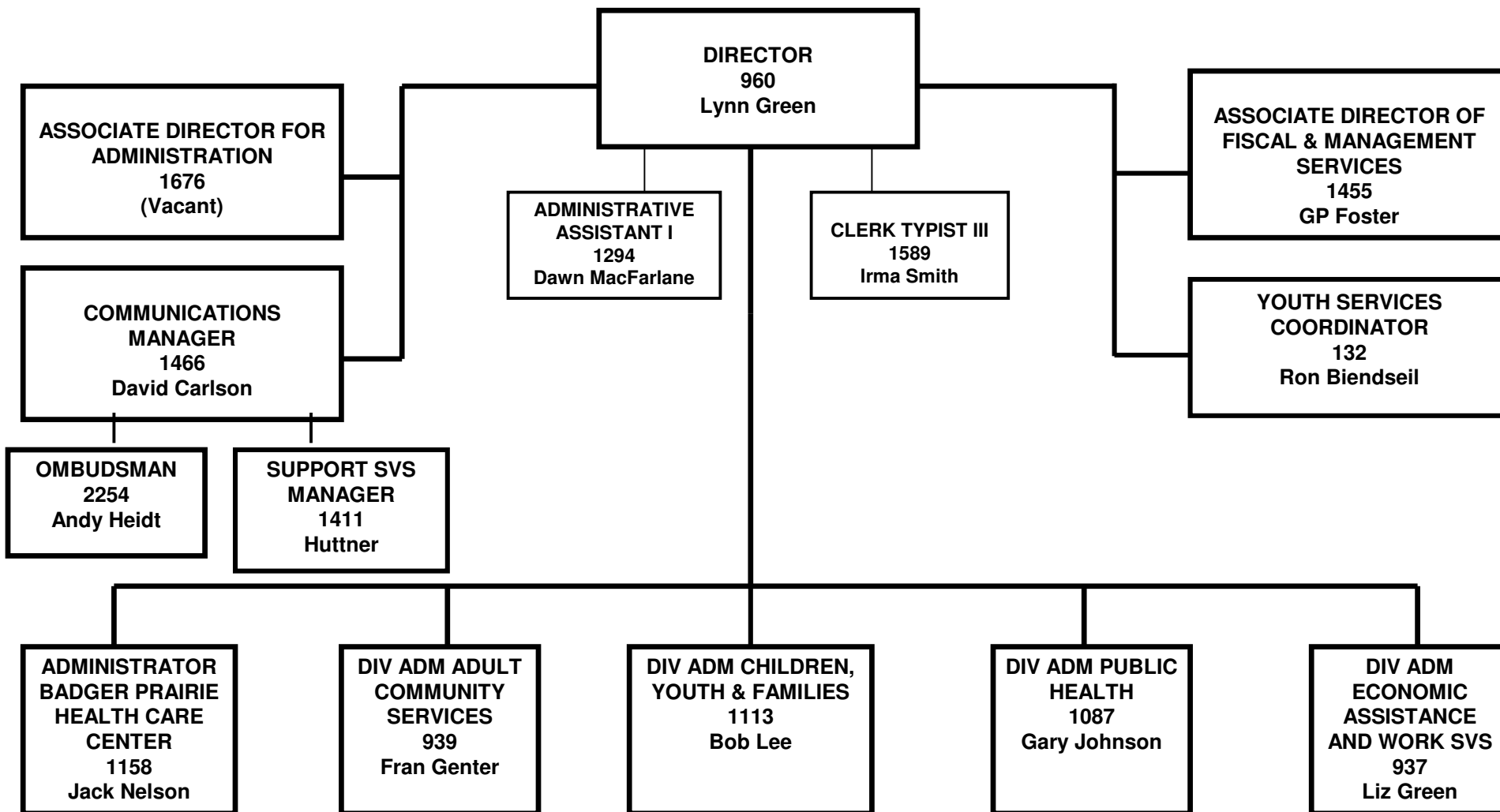
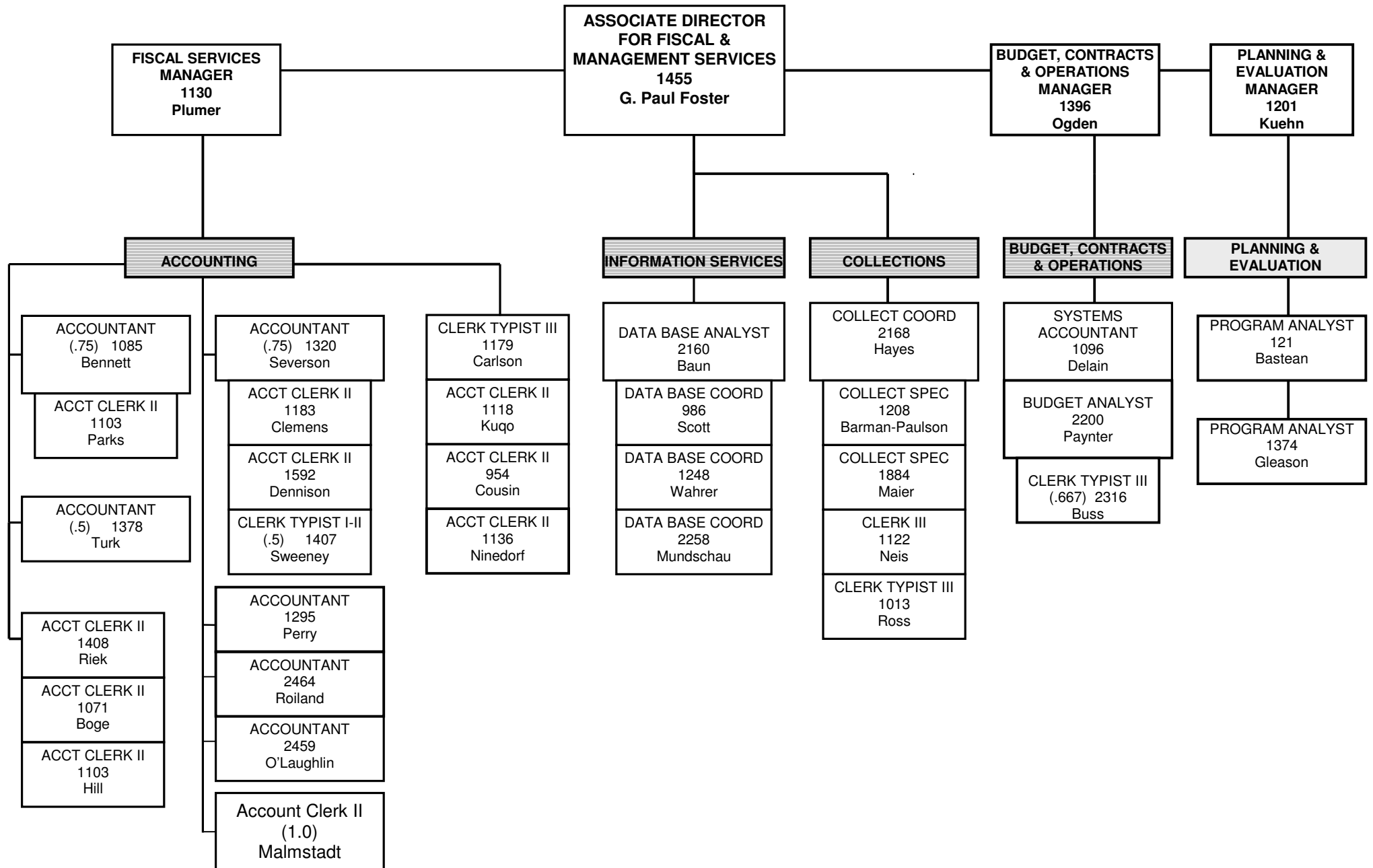


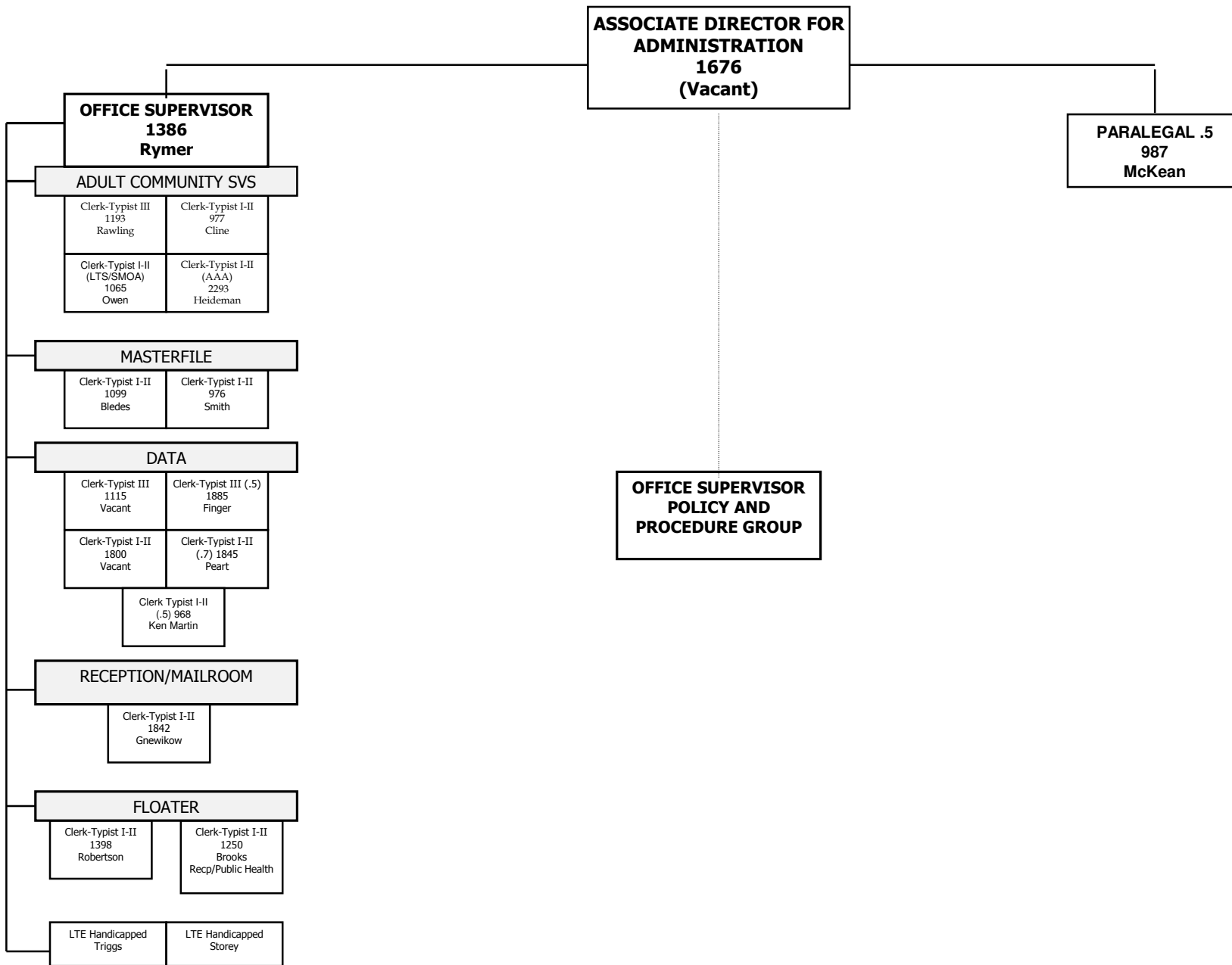
**DANE COUNTY DEPARTMENT OF HUMAN SERVICES
ADMINISTRATION ORGANIZATIONAL CHART
August 2004**



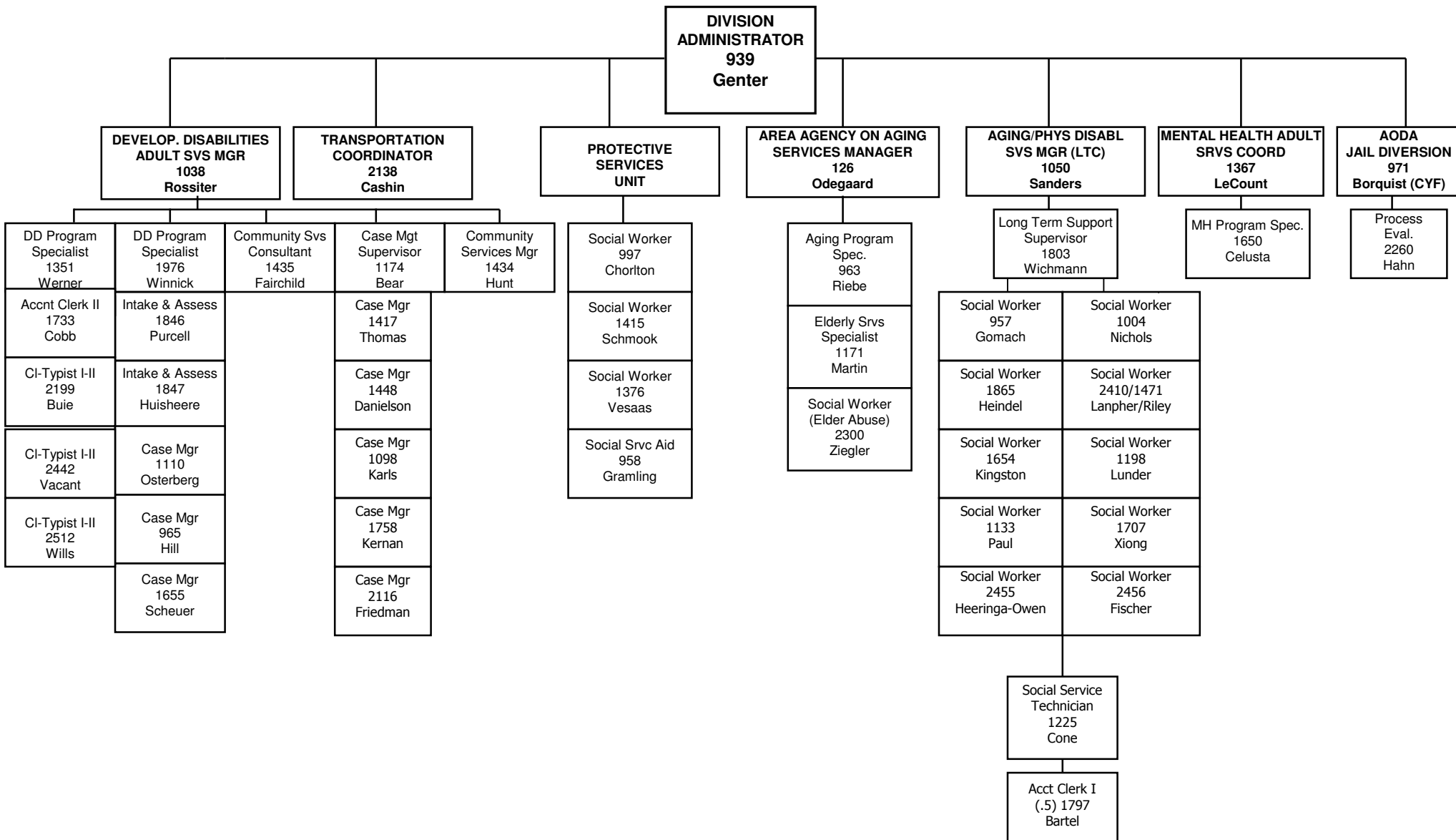
**DANE COUNTY DEPARTMENT OF HUMAN SERVICES
 PLANNING, EVALUATION, AND FISCAL SERVICES ORGANIZATIONAL CHART
 August 2004**



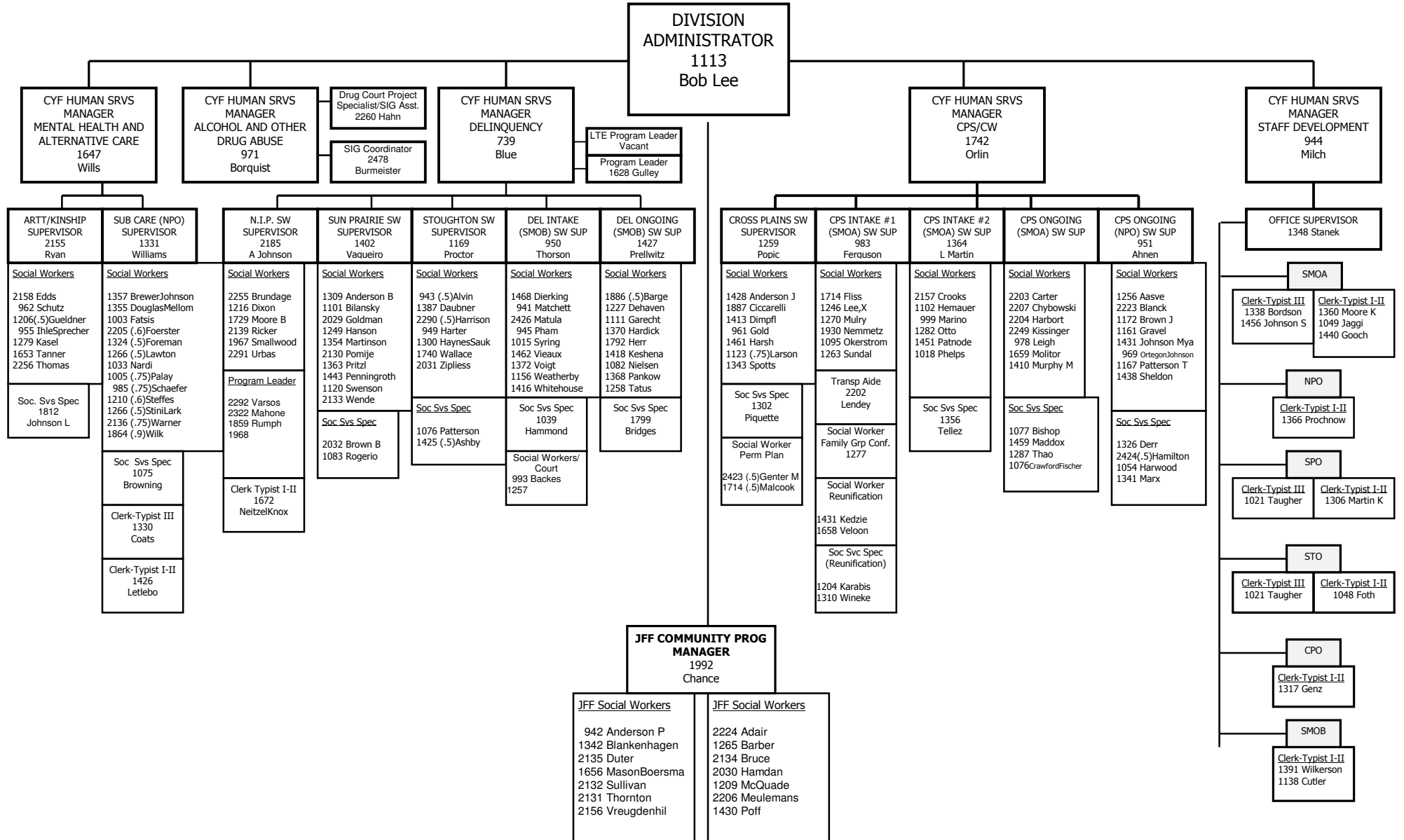
**DANE COUNTY DEPARTMENT OF HUMAN SERVICES
ORGANIZATIONAL CHART
August 2004**



**DANE COUNTY DEPARTMENT OF HUMAN SERVICES
ADULT COMMUNITY SERVICES ORGANIZATIONAL CHART
August 2004**

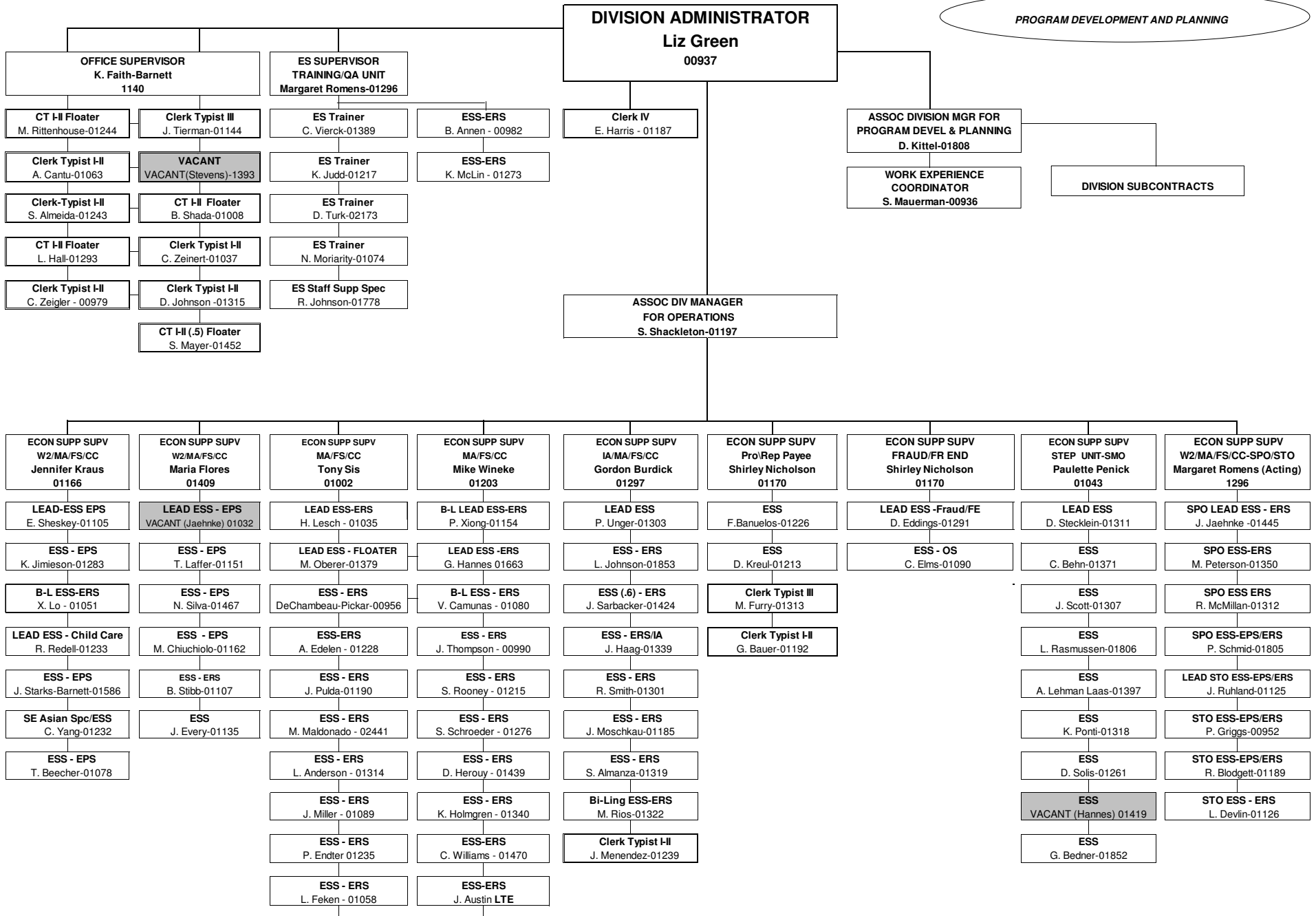


DANE COUNTY DEPARTMENT OF HUMAN SERVICES CHILDREN, YOUTH & FAMILIES ORGANIZATIONAL CHART August 2004

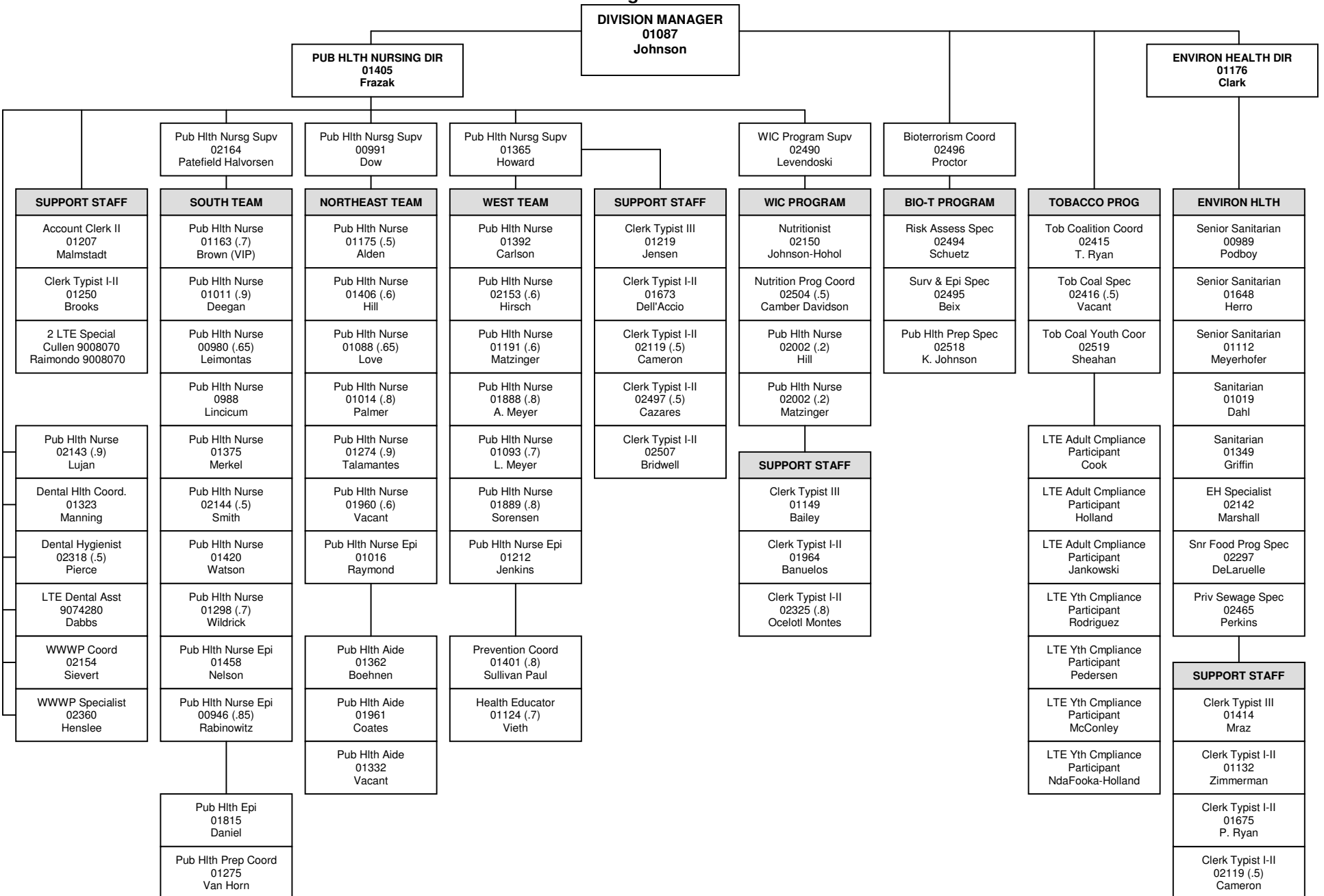


**DANE COUNTY DEPARTMENT OF HUMAN SERVICES
ECONOMIC ASSISTANCE & WORK SERVICES DIVISION
ORGANIZATIONAL CHART**

AS OF 8-23-04



**DANE COUNTY DEPARTMENT OF HUMAN SERVICES
PUBLIC HEALTH ORGANIZATIONAL CHART
August 2004**



**DANE COUNTY DEPARTMENT OF HUMAN SERVICES
BADGER PRAIRIE HEALTH CARE CENTER ORGANIZATIONAL CHART
August 2004**

